

ART Dashboard Excel Add-in

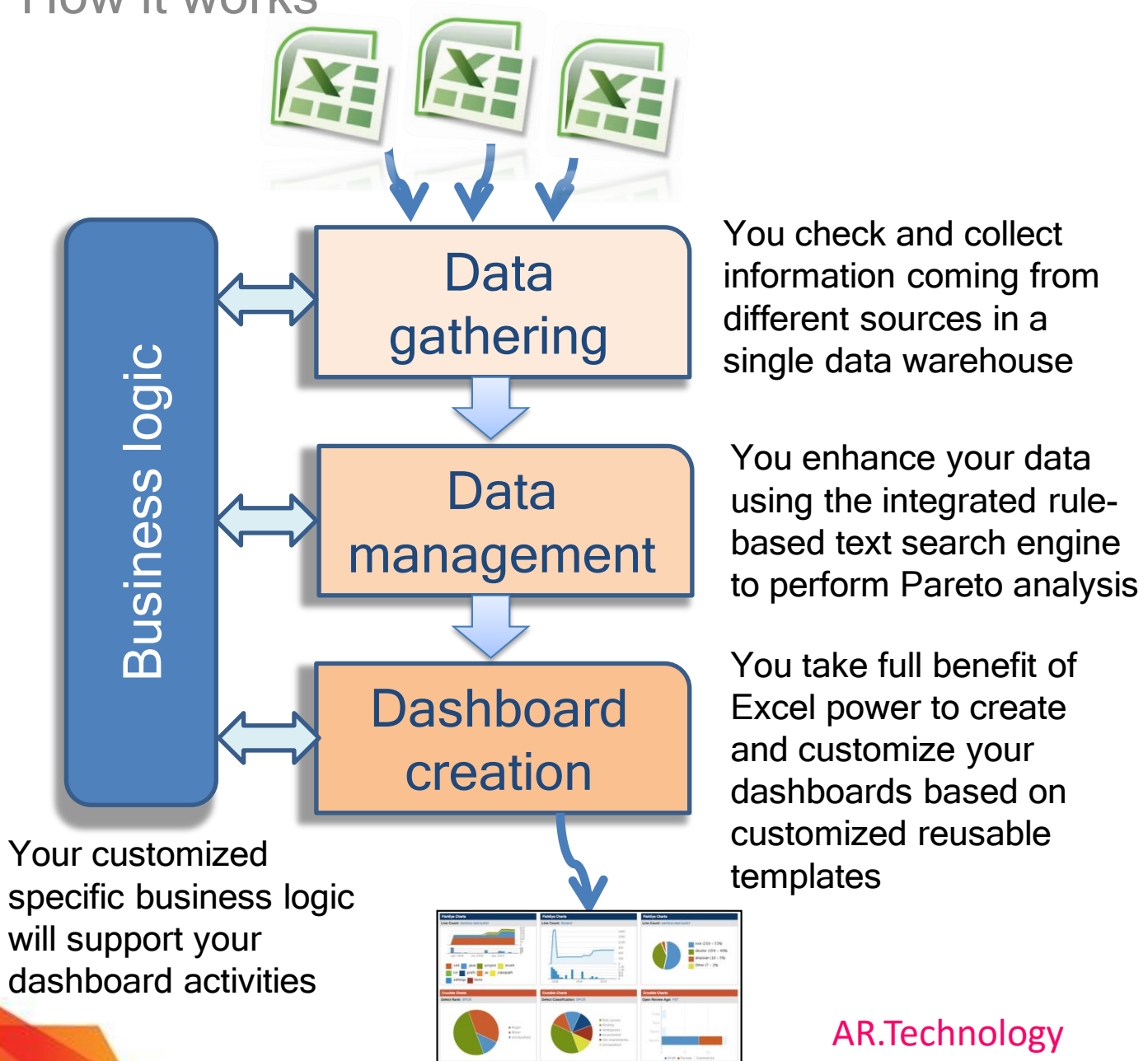
www.art-dashboard.com

contact@art-dashboard.com

What it does

Excel has long been used for dashboard creation due to its ease of use and wide range of charting and data management functions. Now, you can quickly and easily create your regular dashboard.

How it works



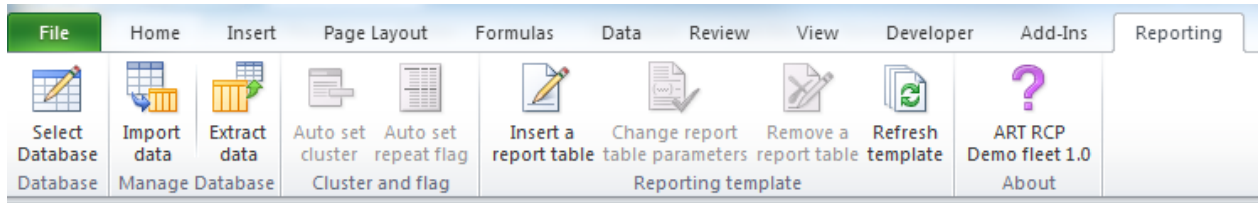
AR.Technology

Creating software in an art

Available functions / Use cases

Simple user interface

All functions available from the Excel ribbon



Data gathering

Data check (data type, range of values, list of values)

Several import mode (append only, replace, append or replace)

Apply formulas on imported values

Data management

Update values according identify rules

Automatic clusterisation using a rule based text search engine

Dashboard creation

Filtering, sorting, conditional formatting, statistical function (standard deviation, ...), moving average, ratio, charting, ...

Select data table in a range of predefined dashboard tables

Create templates for regular dashboard

Possible use cases

- Create a vertical standalone business solution to deal with a specific business domain
- As a COTS provider, rapidly integrate dashboard function to your product

Business Logic example

Aircraft reliability

What is does

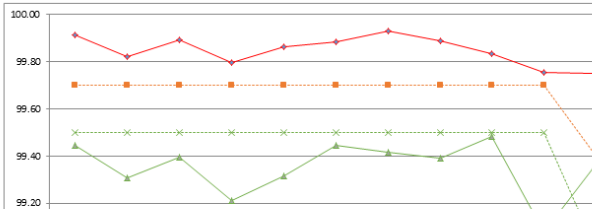
A dedicated business logic has been created to support airlines and CAMO organizations doing their reliability control program.

Available metrics and domains

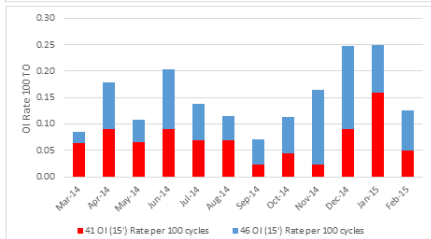
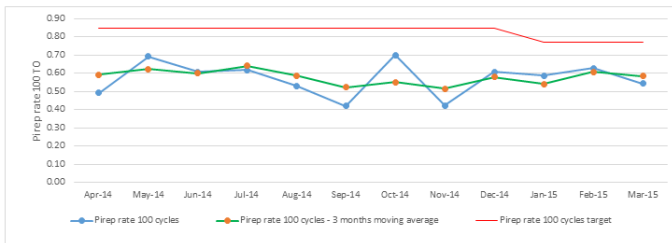
Domains: Fleet performance (including Etops), Fleet utilization, Maintenance performance, Station performance, Component performance (including rogue unit detection), System performance, Alert level computation.

Metrics: A/C utilization, Mechanical reliability, On Time Performance (OTP), IFSD rate, Pirep/Marep rate, Alert levels, MEL closure delay duration. MTBUR. ...

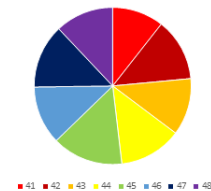
Fleet performance



ATA 21 - Air conditioning



Last 12 month OI distribution



MTBUR

■ Last 12 months MTBU lower than Alert MTBUR
■ More than 30% degradation of last 3 months MTBUR vs last 12 months MTBUR

Designation	ATA Chapt	Pts	QPA	Alert MTBUR	Last 3 Months MTBUR	Last 12 Months MTBUR	Last 12 Month MTBUR
Designation of group G_025477567 (ATA 78)	78	025477567	2	7510	3	12512	8
Designation of group G_02185721 (ATA 28)	28	02185721	6	10326	1	116126	4
Designation of group G_0306H656N (ATA 46)	46	0306H656N	4	7758	3	29455	5
Designation of group G_031053HQ2 (ATA 91)	91	031053HQ2	3	8437	1	70380	2
Designation of group G_04605382 (ATA 47)	47	04605382	4	9117	1	69598	15
Designation of group G_052787GT7	79	052787GT7	6	10123	3	37536	7
A8582	2	12339	2	22873	8	23042	23042
562A	2	11620	5	9697	14	13955	13955
3E4700	2	11620	5	9697	14	13955	13955
0032T	3	7936	11	4639	34	6047	6047
5620H	3	12628	6	10459	20	12644	12644
303SR							
IFC73T							